

External BB Installation Instructions



IMPORTANT NOTICE:

- Do not alter this product in any way as it can cause unseen damage. Any modifications to this product will void the warranty.
- TOKEN suggests taking your bottom bracket to your local authorized TOKEN dealer for installation, service and adjustments.
- Read the user's guide before installation and use. Follow all instructions carefully. If you have any questions, don't ride the bike. Take it to your local TOKEN dealer for assistance.

BEFORE RIDING:

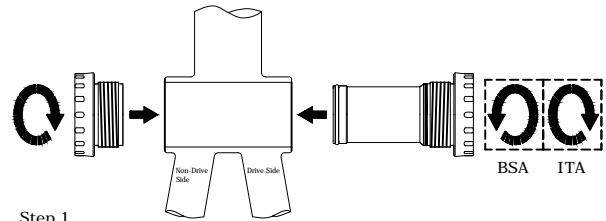
- Check that there is no side-to-side movement in the bottom bracket. Also check that the cranks spin smoothly. If there is movement or the bottom bracket is not smooth, take the bicycle to your local TOKEN dealer for service or replacement.
- Ensure that the cranks are firmly attached to the bottom bracket. Improperly attached cranks can become detached from the bicycle and serious injury can result. Never ride a bicycle with improperly attached cranks.

AFTER RIDING:

- When cleaning the bottom bracket, only use mild soap and water. Never spray the bottom bracket with high-pressure water. Water can enter the bottom bracket and cause it to wear prematurely.

WARRANTY:

All TOKEN products are guaranteed against defects in materials or workmanship for two (2) years from the original date of purchase. This warranty applies to the original owner only and is not transferable. The warranty is considered void if resold. The warranty does not cover normal wear and tear or damage from abuse. Please see our website or contact your local dealer or distributor for more details.



Step 1

Install any necessary spacer or adaptor, according to chart.

Step 2

Thread the cups into the frame by hand, ensuring they are tightened according to the direction arrows on the bottom bracket.

Step 3

Use a torque wrench to tighten to 35-50 N.m (310-443 in-lb)

www.tokenproducts.com

BSA/ITA FRAME (ITA version only available for TK877EX and TK877TBT)

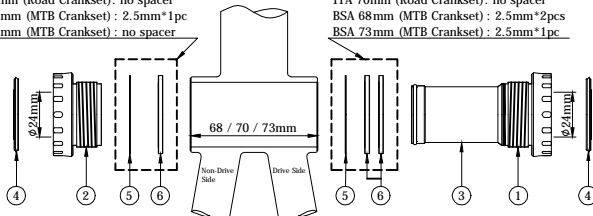
MODEL: TK877EX/TK877TBT TK878EX/TK878TBT

No.	Description	Q'ty	No.	Description	Q'ty
1	Right Cup	1	6	2.5mm Spacer	3
2	Left Cup	1			
3	Sleeve	1			
4	Dust Cover	2			
5	0.5mm Spacer	2			

Note: The ④ Dust Cover is not included with TK877EX and TK877TBT.

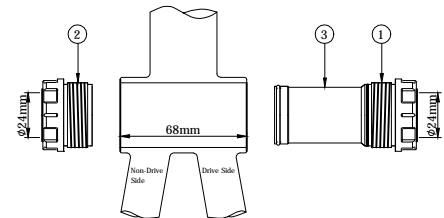
BSA 68mm (Road Crankset) : 0.5mm*1pc
ITA 70mm (Road Crankset): no spacer
BSA 68mm (MTB Crankset) : 2.5mm*1pc
BSA 73mm (MTB Crankset) : no spacer

BSA 68mm (Road Crankset) : 0.5mm*1pc
ITA 70mm (Road Crankset): no spacer
BSA 68mm (MTB Crankset) : 2.5mm*2pcs
BSA 73mm (MTB Crankset) : 2.5mm*1pc



MODEL: TK888

No.	Description	Q'ty
1	Right Cup	1
2	Left Cup	1
3	Sleeve	1



SHIMANO CRANKSET

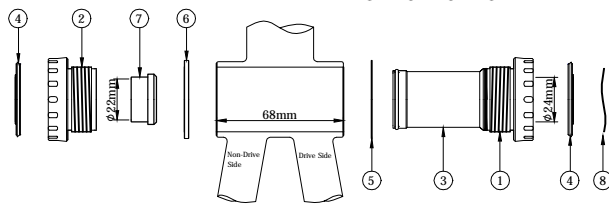
SHIMANO CRANKSET (ROAD ONLY)

MODEL: TK877EX/TK877TBT/TK878EX TK878TBT (For SRAM GXP Double Road)

No.	Description	Q'ty	No.	Description	Q'ty
1	Right Cup	1	6	2.5mm Spacer	1
2	Left Cup	1	7	GXP Adaptor	1
3	Sleeve	1	8	Wave Washer	1
4	Dust Cover	2			
5	1mm Spacer	1			

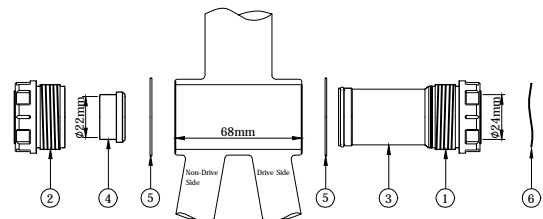
Note: The ④ Dust Cover is not included with TK877EX and TK877TBT.

Note: ⑤ + ⑥ + ⑦ + ⑧ = R23



MODEL: TK888 (For SRAM GXP)

No.	Description	Q'ty
1	Right Cup	1
2	Left Cup	1
3	Sleeve	1
4	GXP Adaptor	1
5	1mm Spacer	2
6	Wave Washer	1



SRAM GXP DOUBLE ROAD CRANKSET

SRAM GXP DOUBLE ROAD CRANKSET

MODEL: TK877EX/TK877TBT/TK878EX TK878TBT (For SRAM GXP MTB)

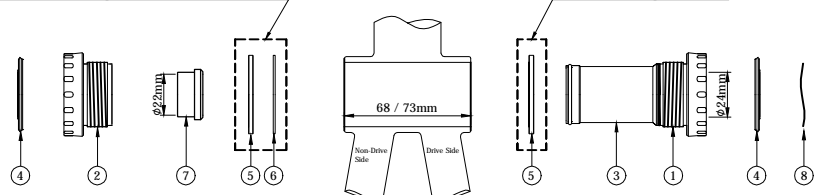
No.	Description	Q'ty
1	Right Cup	1
2	Left Cup	1
3	Sleeve	1
4	Dust Cover	2
5	2.5mm Spacer	2
6	1mm Spacer	1
7	GXP Adaptor	1
8	Wave Washer	1

Note: The ④ Dust Cover is not included with TK877EX and TK877TBT.

Note: ⑤ + ⑥ + ⑦ + ⑧ = M383

BSA 68mm: 2.5mm spacer * 1 + 1mm spacer * 1
BSA 73mm: 1mm spacer * 1

BSA 68mm: 2.5mm Spacer * 1
BSA 73mm: No Spacer



SRAM GXP MTB CRANKSET